

Friends of Earlham Cemetery walk 10/06/18

Species list (note not all species seen by all observers)

Bees

Orange-tailed Mining Bee *Andrena haemorrhoa*

Red-girdled Mining Bee *Andrena labiata* *photo 1

Grey-patched Mining Bee *Andrena nitida*

Honey Bee *Apis mellifera*

Tree Bumblebee *Bombus hypnorum*

Red-tailed Bumblebee *Bombus lapidarius*

Common Carder Bee *Bombus pascuorum*

Patchwork Leaf-cutter *Megachile centuncularis*

Beetles

Garden Chafer

Harlequin Ladybird

Tillus elongatus * photo 2

Common Grammoptera *Grammoptera ruficornis*

Fairy-ring Longhorn Beetle *Pseudovadonia livida* * photo 3

Wasp Beetle *Clytus arietis*

Bugs

Closterotomus norwegicus

Dryophilicoris flavoquadrimaculatus

Birch Catkin Bug *Kleidocerys resedae*

Red-legged Shieldbug *Pentatoma rufipes* (late instar)

Butterflies

Speckled Wood

Meadow Brown

Flies

Dexia rustica

Galls

Birch Big Bud Gall *Acalitus calycophthirus* (enlarged buds on birch)

Aceria cephaloneus (small nail galls on Sycamore)

Aceria exilis (pimples along the veins of Lime leaves)

Eriophyes tiliae (nail galls on Lime)

Plagiotrochus quercusilicis (round red galls on Holm Oak). Seems to be the first Norfolk record of this gall, which was first found in Cornwall in the early 2000s and has spread out from there. The galls seen were still small so ideally they would be checked again when larger. * [Photo 4](#)

Hoverflies

Cheilosia albitarsis/ranunculi

Cheilosia impressa

Epistrophe grossulariae

Marmelade Hoverfly *Episyrphus balteatus*

Eristalis pertinax

Eupeodes luniger

Helophilus pendulus

Melangyna labiatarum

Merodon equestris

Myathropa florea

Syrphus sp.

Xanthogramma pedisequum s.l.

Xylota segnis

Xylota sylvarum

Leaf-mines

Agromyza alnibetulae (leaf mine in Birch)

Agromyza idaeina (leaf mine in Bramble)

Agromyza sulfuriceps (leaf mine in Dog Rose) * [Photo 5](#)

Chromatomyia 'atricornis' agg (leaf mine in Sow Thistle)

Phyllonorycter maestingella (fold in Beech)

Phytomyza ranunculi (leaf mine in Creeping Buttercup)

Moths

Horse-chestnut Leaf-miner *Cameraria ohridella* (developing mines in Horse Chestnut)

Cnephasia sp.

Hook-streak Grass-veneer *Crambus lathoniellus*

Phyllonorycter maestingella (leaf mine on Beech leaf)

Odonata

Common Blue Damselfly

Sawflies

Large Rose Sawfly *Arge pagana*

Blennocampa phyllocalpa (leaf rolls in rose)

Cephus pygmaeus or *spinipes* * Photo 6

Soldierflies & allies

Broad Centurion

Common Awl Robberfly

Horsefly sp (probably *Hybomitra bimaculata*)

Spiders

Cucumber Orb Web Spider *Araniella cucurbitina* agg

Paidiscura pallens ('sputnik' egg sac on the underside of an Oak leaf) * Photo 7

Tetragnatha sp (possibly *T. obtusa*)

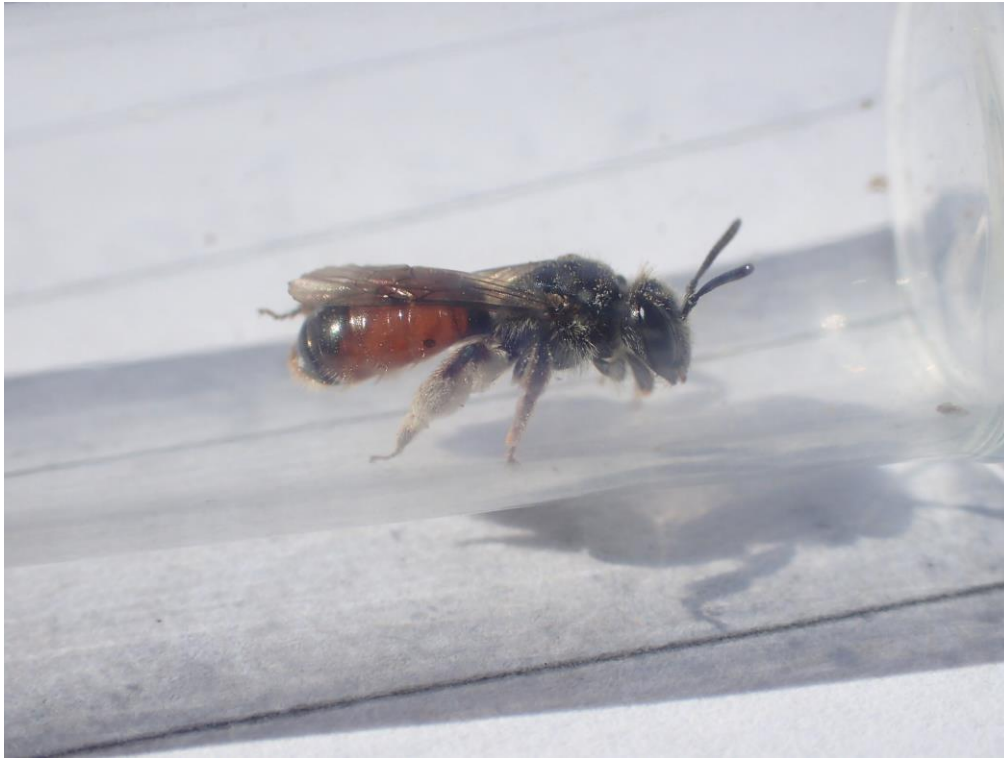


Photo 1 – Red-girdled Mining Bee



Photo 2 – *Tillus elongatus*



Photo 3 – Fairy Ring Longhorn beetle



Photo 4 – *Plagiotrochus quercusilicis* gall on Holm Oak



Photo 5 – *Agromyza sulfuriceps*



Photo 6 - *Cephus sp*



Photo 7 – *Paidiscura pallens* egg sac